
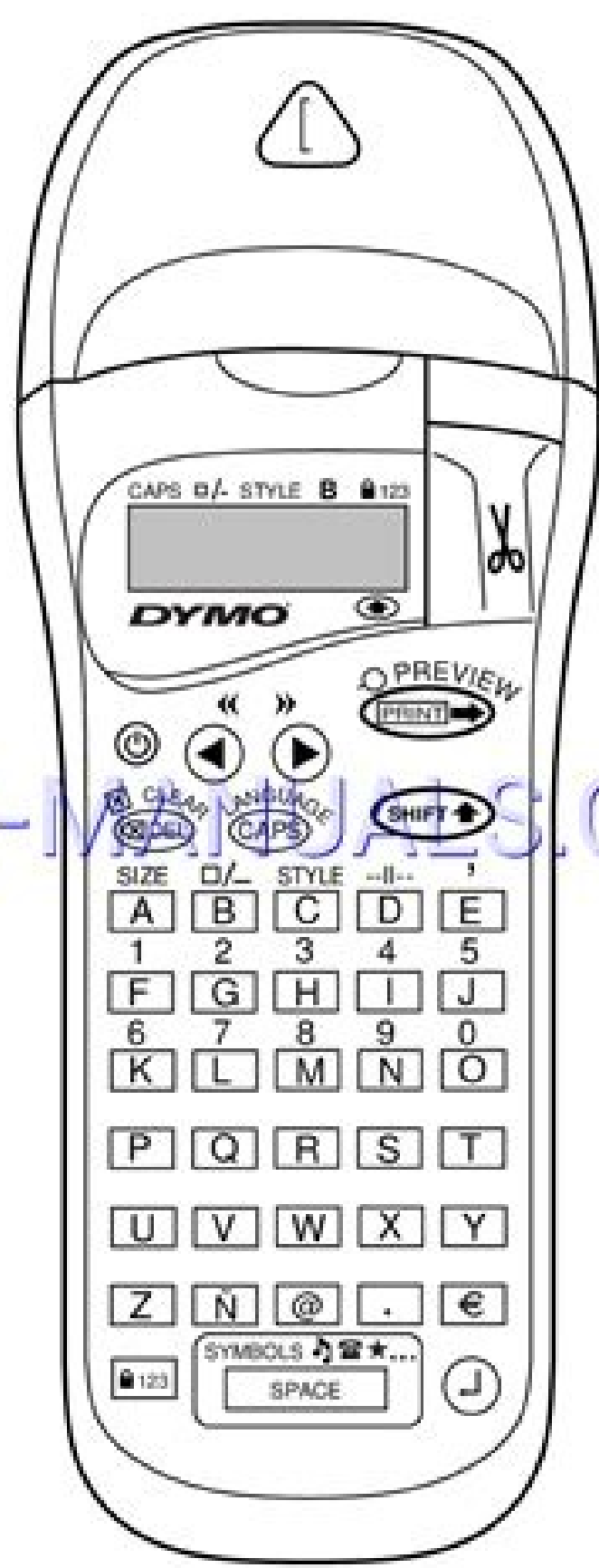


I'm not robot  reCAPTCHA

**Continue**



EN-MANUALS.COM

## Cutting Head Part Numbers

	Head/Blade Type	Part Number	Trimmer Line Diameter		152 mm	154 mm	154 mm	15.2 mm	15.2 mm	15.2 mm
			Standard	Optional						
<b>LIGHT GRASS TRIMMERS</b>	<b>STIHL SuperCut™ head:</b> Fully automatic, double nylon line is automatically kept at the proper cutting length.	STIHL SuperCut™ 29-2	4002 710 2194	.095"	—	—	—	—	—	—
		STIHL SuperCut™ 40-2	4003 710 2142	.095"	—	—	—	—	—	—
	<b>AUTO CUT™ head:</b> Double line for trimming and mixing. Nylon line is fed automatically by TopAction™ AUTO CUT™ C S2 EasySpool™ version available.	AUTO CUT™ C	4006 710 2123	.090"	—	—	—	—	—	—
		AUTO CUT™	4006 710 2103	.090"	—	—	—	—	—	—
		AUTO CUT™ C	4006 710 2106	.090"	—	—	—	—	—	—
		AUTO CUT™ C	4002 710 2196	.095"	—	—	—	—	—	—
		AUTO CUT™	4004 710 2192	.095"	.090"	—	—	—	—	—
		AUTO CUT™	4002 710 2191	.095"	.100"	—	—	—	—	—
		AUTO CUT™	4002 710 2107	.095"	.100"	—	—	—	—	—
		AUTO CUT™	4003 710 2189	.095"	.100"	—	—	—	—	—
	AUTO CUT™	4005 710 2192	.095"	.100"	—	—	—	—	—	
<b>FixCut™ head:</b> Lightweight and quick loading, insert of grass of trimmer line in each eyelet.	FixCut™	4006 710 2188	.095"	.090"	—	—	—	—	—	—
	FixCut™	4002 710 2198	.095"	.090/120/130"	—	—	—	—	—	—
	FixCut™	4001 710 2105	—	.090/095/100"	—	—	—	—	—	—
<b>DuroCut head:</b> Best trimmer head for users who prefer manual heads that require frequent line applications.	DuroCut	4006 710 2125	.090"	.090/100"	—	—	—	—	—	—
	DuroCut	4002 710 2167	.120"	.090/095/100"	—	—	—	—	—	—
	DuroCut	4005 710 2100	.120"	.120/130"	—	—	—	—	—	—
<b>TrimCut™ head:</b> Manual head nylon head is particularly suitable for mowing low-growing grass around wild obstacles.	TrimCut™	4002 710 2196	.100"	.095"	—	—	—	—	—	—
	TrimCut™	4003 710 2108	.100"	.095"	—	—	—	—	—	—
	TrimCut™	4005 710 2104	.100"	.095"	—	—	—	—	—	—
<b>STIHL PolyCut™ head:</b> A universal cutting tool for trimming large areas. It cut with three thermoplastic blades.	STIHL PolyCut™	4004 710 2180	—	—	—	—	—	—	—	—
	STIHL PolyCut™	4006 710 2194	—	—	—	—	—	—	—	—
	STIHL PolyCut™	4002 710 2189	—	—	—	—	—	—	—	—
	STIHL PolyCut™	4003 710 2194	—	—	—	—	—	—	—	—
<b>Metal blade:</b> Steel, for cutting edges, for working on large areas of tough weeds and heavy grass.	Grass 4	25.4 mm	4001 713 3801	—	—	—	—	—	—	—
	Grass 4	20 mm	4000 713 3801	—	—	—	—	—	—	—
<b>Metal blade:</b> Steel, 8 teeth, for cutting thick, dry weeds and reeds.	Grass 8	25.4 mm	4001 713 3803	—	—	—	—	—	—	—
	Grass 8	20 mm	4000 713 3802	—	—	—	—	—	—	—
<b>BRUSH</b>	<b>Brush knife:</b> Steel, for brushing and clearing tough, tangled weeds, undergrowth and scrub.	Brush Knife	25.4 mm	4112 713 4100	—	—	—	—	—	—
		Brush Knife	20 mm	4119 713 4100	—	—	—	—	—	—
		Brush Knife	20 mm	4110 713 4100	—	—	—	—	—	—
<b>FORESTRY</b>	<b>Circular saw blade, scratcher tooth:</b> Steel, for grassed bushes and thin tree trunks.	Scratcher	25.4 mm	4112 713 4201	—	—	—	—	—	—
		Scratcher	20 mm	4000 713 4200	—	—	—	—	—	—
		Scratcher	20 mm	4000 713 4205	—	—	—	—	—	—
		Scratcher	20 mm	4104 713 4200	—	—	—	—	—	—
	<b>Circular saw blade, chisel tooth:</b> Steel, for grassed bushes and thin tree trunks (depends on diameter of trunk and technique used).	Chisel	25.4 mm	4112 713 4203	—	—	—	—	—	—
	Chisel	20 mm	4119 713 4200	—	—	—	—	—	—	
	Chisel	20 mm	4110 713 4204	—	—	—	—	—	—	





Check for misalignment or bending of mounting parts, bushings of parts, and any other condition that may affect the tool operation. Refer to the user manual for more information.  
Use only accessories that are recommended by the manufacturer for your model.  
Do not use the tool for any purpose other than that for which it is designed.

**Service**  
This service must be performed only by qualified repair personnel. Service or repair of this tool should be performed only by qualified repair personnel. Service or repair of this tool should be performed only by qualified repair personnel. Service or repair of this tool should be performed only by qualified repair personnel.

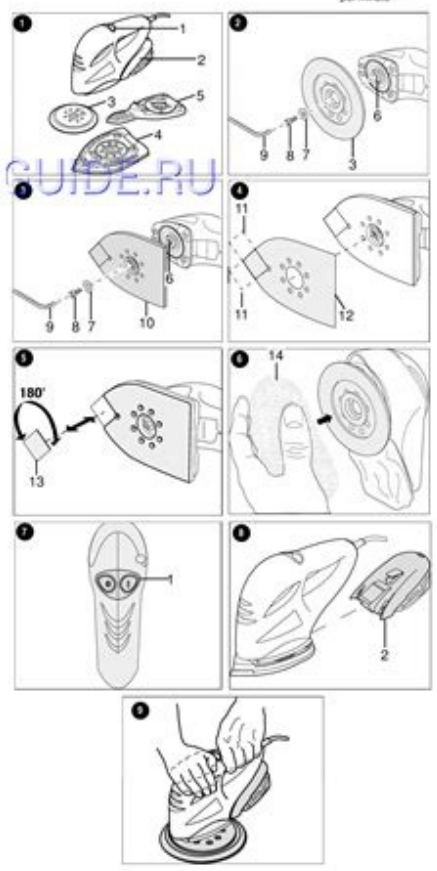
**Specific Safety Rules**  
Do not use the tool on wet surfaces when performing an operation where the tool may become energized. Do not use the tool on wet surfaces when performing an operation where the tool may become energized. Do not use the tool on wet surfaces when performing an operation where the tool may become energized.

**Work Area**  
Do not use the tool in explosive atmospheres, such as in the presence of flammable vapors, liquids, or gases. Do not use the tool in explosive atmospheres, such as in the presence of flammable vapors, liquids, or gases. Do not use the tool in explosive atmospheres, such as in the presence of flammable vapors, liquids, or gases.

**Electrical Safety**  
Do not use the tool on wet surfaces. Do not use the tool on wet surfaces. Do not use the tool on wet surfaces. Do not use the tool on wet surfaces. Do not use the tool on wet surfaces.

**Personal Safety**  
Do not use the tool on wet surfaces. Do not use the tool on wet surfaces. Do not use the tool on wet surfaces. Do not use the tool on wet surfaces. Do not use the tool on wet surfaces.

**Tool Use and Care**  
Do not use the tool on wet surfaces. Do not use the tool on wet surfaces. Do not use the tool on wet surfaces. Do not use the tool on wet surfaces. Do not use the tool on wet surfaces.



**Selecting the text size**  
Pressing the **SIZE** key ( + **A** ) will display the size menu, with four options:

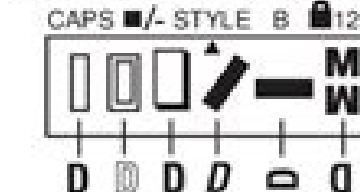


- I narrow (condensed)
- I normal
- wide (extended)
- B big font (highly visible labels using the entire print height)

You can use Narrow, Normal and Wide fonts in two-line labels, where they will be reduced to half their normal height.

Move the cursor to the required size with the **◀** and **▶** keys, and press **⏎** to select.

**Selecting the text style**  
Pressing **STYLE** ( + **C** ) will display the style menu, with six options:



- Normal
- Outline
- Shadow
- Italic
- > ◀
- 1011iM

You cannot combine these different text styles, or use these styles with the big font setting.

Move the cursor to the required style with the **◀** and **▶** keys, and press **⏎** to select.

**Underlining or boxing text**  
Pressing the **□/▭** key will display the box/underline menu, with eight options:

- no box
- underlined
- square box
- Rounded box
- shaded box
- pointed box
- zigzag box
- crocodile box

You cannot combine different underlining or box settings, or use them with the big font setting.

Move the cursor to the required setting with the **◀** and **▶** keys, and press **⏎** to select.

**To exit from a menu**  
Press **⏎** to exit from a menu or cancel an action (except printing).

**CLEARING and other settings**  
Use **CLEAR** ( + **⏎** ) to delete the entire content of the text you have stored in the buffer. This will delete the text, and

## Fisher® 8510B Eccentric Disc Control Valve (EMA (1))

Contents	
Introduction	1
Scope of Manual	1
Description	3
Specifications	3
Installation	3
Maintenance	6
Packing Maintenance	7
Stopping Leakage	7
Replacing the Packing	8
Replacing the Seal Ring	11
Replacing the Disc and Shaft Assembly	12
or the Sealings	12
Actuator Mounting	17
Parts Ordering	19
Parts Kits	20
ENVIRO-SEAL™ Packing System Retrofit Kits	20
ENVIRO-SEAL™ Packing System Repair Kits	20
Parts List	21

Figure 1. Fisher 8510B Eccentric Disc Control Valve



### Introduction

**Scope of Manual**  
This instruction manual includes installation, maintenance, and parts information for NPS 2 through 12 Fisher 8510B eccentric disc control valves that mate with ASME, EN, or JIS flanges (see figure 1). Refer to separate instruction manuals for information covering the actuator and accessories.



Cozmo robot instruction manual. Cozmo robot manual pdf. Cozmo robot manual. Cozmo robot instructions.

1. Click on it and it will take you to a page containing all your installed applications. After installation, Click "Open" to start using the Cozmo app. Remove feeding and tuning Look, I get that cozmo kind of has a life too. This newest update added quite a few features, but it's the little things that go almost unnoticed. Steps to setup your pc and download Cozmo app on Windows 11: Check if your computer is compatible: Here are the minimum requirements: RAM: 8GB (minimum), 16GB (recommended) Storage: SSD Processor: Intel Core i3 8th Gen (minimum or above) AMD Ryzen 3000 (minimum or above) Qualcomm Snapdragon 8c (minimum or above) Processor Architecture: x64 or ARM64 Check if Cozmo already has a native Windows version here >. I got him last Christmas and he is godly. Step 3: For PC - Windows 7/8 / 8.1 / 10 / 11 Now, open the Emulator application you have installed and look for its search bar. He makes my happy that is what is most important to know a friendly cute happy robot my friends love him so much they ask to talk to them so does my family they really love cozmo that we bought a carrying case for him I even made him a little wooden house just for him to do anything I coded and made cubes to make cozmo to make a even bigger prymid and I also love how he gets all happy when you loose to him. What's incredible is his unknown potential! Now we are all done. Cozmo On iTunes Download Developer Rating Score Current version Adult Ranking Free On iTunes Anki 4205.4.55314 3.4.0 4+ Download on Android Download Android Thank you for reading this tutorial. If one is looking for a robot (or droid depending on preferences) Cozmo is the perfect choice! The cube batteries won't! By NickyBoy123456789 (Pcmac user) Anki you guys need to do some work on those cubes for cozmo and I mean like you should make it instead of refilling the cube batteries they should be rechargeable like cozmo like cause thats gonna cost over like a thousand dollars a year!!! and I'm just a child and thats a total ripoff to me! so from now on you should make rechargeable cubes and put them in the package with cozmo, and have the cubes themselves and the charger in stores! cause thats just ridiculous! and you guys cant say no cause look what the worlds invented!!! things you can climb walls with like spider man and they made that in like 2014!!!! even flying cars already!!! you guys even made cozmo rechargeable! so please do that for me and tons of other people are probably thinking that lol!!!! but cozmo is cool but the cubes man! ill change this to a five star rating once you guys do that and everyone else looking at this comment either like or help me out! thank you for your time looking at this and please do that for the whole world plus you might even be richer!!!! Cozmo is great By 37352925382 (Pcmac user) Cozmo is enjoyable and he is so very cute, and I love how he gives you a fist bump and that's so cute to see a robot even do something like that, cozmo doesn't recognize me sometimes but then after a few seconds he says my name it is really awesome. Since playing with him is the main idea, why not make it the only thing you do with him 3. To find Cozmo Android app on Windows 11 after you install it, Go to Start menu > Recommended section. Click on it and start using the application. You see, Cozmo is a real-life robot like you've only seen in movies, with a one-of-a-kind personality that evolves the more you hang out. Kindly contact us here -> How to download and install Cozmo on Windows 11 To use mobile apps on your Windows 11, you need to install the Amazon Appstore. Follow the on screen directives in order to install the application properly. Top Pcmac Reviews If this happens, my review will be 6 stars By BBallBoyDaBoss (Pcmac user) Look, cozmo is amazing. Once it's set up, you'll be able to browse and install mobile apps from a curated catalogue. For example, Cozmo will clear its voice before singing a song. But it kind of gets annoying having to feed him every single time we use him. A window of Cozmo on the Play Store or the app store will open and it will display the Store in your emulator application. 55 2nd Street, 15th Floor, San Francisco, CA 94105, USA. Was the setup process hard? And tuning just doesn't make any sense whatsoever. He'll nudge you to play and keep you constantly surprised. One can easily gain sparks as well to play more games, and Cozmo will generate them randomly as well. Open the app page by clicking the app icon. He's your accomplice in a crazy amount of fun. I don't know why someone is complaining about that. Software Screenshots Download and install Cozmo on your Laptop or Desktop computer Check compatible PC Apps or Alternatives Or follow the guide below to use on PC: Select your PC version: If you want to install and use the Cozmo app on your PC or Mac, you will need to download and install a Desktop App emulator for your computer. The links are provided in step one Need help or Can't find what you need? If you want to run android apps on your Windows 11, this guide is for you. Install the Amazon Appstore from the Microsoft Store here >. You can download the Bluestacks Pc or Mac software Here >>> Step 2: Install the emulator on your PC or Mac Now that you have downloaded the emulator of your choice, go to the Downloads folder on your computer to locate the emulator or Bluestacks application. Step 4: For Mac OS Hi, Mac user! The steps to use Cozmo for Mac are exactly like the ones for Windows OS above. I absolutely love working with my Cozmo, and knowing I can design my own personal programs is a huge plus. Those were amazing! As another rewarding was to make you want to hang out with your cozmo even more! Please take this into consideration anki Thanks Zane The Droid You're Looking For By Samurai Photographer (Pcmac user) Yes, I used a Stars Wars pun (kind of lame). And finally, bring back daily challenges! Remember those daily challenges? Cozmo robot required to play. Things cozmo needs is more stuff like vector vectors voice is a bit to siri You should add to cozmo where you can play music from your phone to him and make him sing the lyrics of the song that would be so cute to see! More interactions with vector I got a vector this Christmas and I'd like to see him and vector interactions more. If this happens, I'll give coNo a 20/10. You see, Cozmo is a real-life robot like you've only seen in movies, with a one-of-a-kind personality that evolves the more you hang out.2. Anki, Cozmo, and the Anki and Cozmo logos are registered trademarks of Anki, Inc.3. Say hello to Cozmo, a gifted little guy who's got a mind of his own and a few tricks up his sleeve.4. Cozmo robot required to play. Once you have found it, click it to install the application or exe on your PC or Mac computer. Simply download the APK directly and install via emulator. Click "Install" I have some suggestions to make it even better though. Available at Anki.com. You can't even use him, and you won't be able to get the daily rewards that Anki.com! For people that run out of Sparks and love their cozmo but can't use him after they run out, seeing it is just sad. Some robots just have it all. After installation, the Amazon Appstore and the Windows Subsystem for Android Settings app will appear in the Start menu and your apps list. He's curiously smart, a little mischievous, and unlike anything ever created. And waiting for three days to unlock new abilities and traits just adds to the playability and longevity of this robot. 4. And that's just a tiny piece of what it can do. If you do the above correctly, the Emulator app will be successfully installed. ©2018 Anki, Inc. All you need to do is install the Nox Application Emulator or Bluestack on your Macintosh. Remove Sparks Everyone who gets cozmo wanted to play with him, but what happens when you run out of Sparks? Most of the tutorials on the web recommends the Bluestacks app and I might be tempted to recommend it too, because you are more likely to easily find solutions online if you have trouble using the Bluestacks application on your computer. Here are some suggestions - being able to talk and play with vector - have cosmos vubes and games be compatible with vector - have them be able to have fun together! 2. More than a companion, Cozmo's a collaborator. If you can't find the Cozmo app there, click on "All apps" next to the pinned section in the Start menu and scroll through the list. Go to the Amazon App store and search for "Cozmo". Have a nice day! Cozmo Software Features and Description Say hello to Cozmo, a gifted little guy who's got a mind of his own and a few tricks up his sleeve. That's the main reason why some review are only one star. Now click Next to accept the license agreement. It's constantly evolving. Selecting "Get" will begin the installation of the Amazon Software Subsystem for Android too. But what's not lame is Cozmo. Open the Amazon Appstore and login with your Amazon account. Now, press the Install button and like on an iPhone or Android device, your application will start downloading. All rights reserved. We have worked diligently to help you understand how to use this app for your computer in 4 simple steps below: Ok. First things first. Follow the best guide for this here >. He's the sweet spot where supercomputer meets loyal sidekick. If there is no native version, proceed to step 3. It can pop wheelies and act like a little magic 8 ball. ✓ What's Cool 1. Anki, Cozmo, and the Anki and Cozmo logos are registered trademarks of Anki, Inc. You should see the icon. Once you found it, type Cozmo in the search bar and press Search. If you want to use the application on your computer, first visit the Mac store or Windows AppStore and search for either the Bluestacks app or the Nox App >> . Is Amazon Appstore on Windows not available in your country or Is Cozmo app not working on your Windows 11? His personality is so cute and I love the games that he has. You will see an icon called "All Apps". Click on Cozmoapplication icon.



arrived on time.Seeing Ash's ... 写真には色々な見方、撮り方があるが、ここでは ファインアート、芸術的観点で説明する。一人一人感じ方が異なるが、素晴らしい芸術写真は感動を与えてくれる、心を揺り動かされる、深く思い巡らわされる、作者の思いが伝わってくる。

Copyright © 2012

Copyright © 2012

Copyright © 2012

Copyright © 2012

Copyright © 2012

Copyright © 2012

Copyright © 2012

Copyright © 2012

Copyright © 2012

Copyright © 2012

Copyright © 2012

Copyright © 2012

Copyright © 2012

Copyright © 2012

Copyright © 2012

Copyright © 2012

Copyright © 2012

Copyright © 2012

Copyright © 2012

Copyright © 2012

Copyright © 2012

Copyright © 2012

Copyright © 2012

Copyright © 2012

Copyright © 2012

Copyright © 2012

Copyright © 2012

Copyright © 2012

Copyright © 2012

Copyright © 2012

Copyright © 2012

Copyright © 2012

Copyright © 2012

Copyright © 2012

Copyright © 2012

Copyright © 2012

Copyright © 2012

Copyright © 2012

Copyright © 2012

Copyright © 2012

Copyright © 2012

Copyright © 2012

Copyright © 2012

Copyright © 2012

Copyright © 2012

Copyright © 2012

Copyright © 2012

Copyright © 2012

Copyright © 2012

Copyright © 2012

Copyright © 2012

Copyright © 2012

Copyright © 2012

Copyright © 2012

Copyright © 2012

Copyright © 2012

Copyright © 2012

Copyright © 2012

Copyright © 2012

Copyright © 2012

Copyright © 2012

Copyright © 2012

Copyright © 2012

Copyright © 2012

Copyright © 2012

Copyright © 2012

Copyright © 2012

Copyright © 2012

Copyright © 2012

Copyright © 2012

Copyright © 2012

Copyright © 2012

Copyright © 2012

Copyright © 2012

Copyright © 2012

Copyright © 2012

Copyright © 2012

Copyright © 2012

Copyright © 2012

Copyright © 2012

Copyright © 2012

Copyright © 2012

Copyright © 2012

Copyright © 2012

Copyright © 2012

Copyright © 2012

Copyright © 2012

Copyright © 2012

Copyright © 2012

Copyright © 2012

Copyright © 2012

Copyright © 2012

Copyright © 2012

Copyright © 2012

Copyright © 2012

Copyright © 2012

Copyright © 2012

Copyright © 2012

Copyright © 2012

Copyright © 2012

Copyright © 2012

Copyright © 2012

Copyright © 2012

Copyright © 2012

Copyright © 2012

Copyright © 2012

Copyright © 2012

Copyright © 2012

Copyright © 2012

Copyright © 2012

Copyright © 2012

Copyright © 2012

Copyright © 2012

Copyright © 2012

Copyright © 2012

Copyright © 2012

Copyright © 2012

Copyright © 2012

Copyright © 2012

Copyright © 2012

Copyright © 2012

Copyright © 2012

Copyright © 2012

Copyright © 2012

Copyright © 2012

Copyright © 2012

Copyright © 2012

Copyright © 2012

Copyright © 2012

Copyright © 2012

Copyright © 2012